

CERTIFICATE OF LOCATION OF GOVERNMENT CORNER

NORTH QUARTER of Section 16, Township 105, Range 42, 5TH P.M.

STATE OF MINNESOTA, County of MURRAY

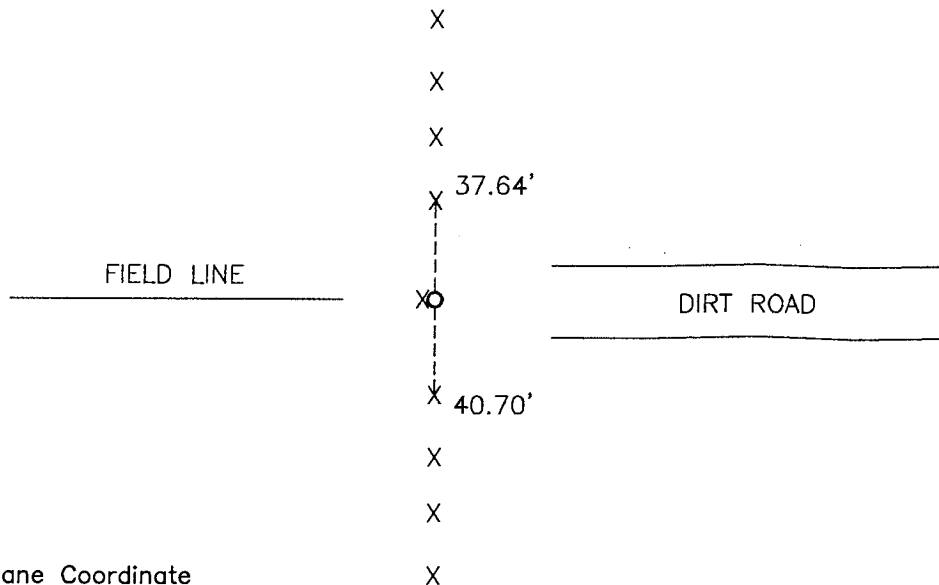
At the corner location shown on the sketch:

On 06-12-2009 found a STONE
DATE

left monument as found, lowered monument, removed monument (explain)

On 06-12-2009 placed a 1" PIPE WITH SEAL #43844
DATE

SKETCH OF REFERENCE TIES



Minnesota State Plane Coordinate System Lyon County Datum NAD83 (1996)

N: 121293.108
E: 466458.731

Nail and survey marker in end fence post South 40.70'
Nail and survey marker in end fence post North 37.64'
Steel fence post with yellow survey marker tube West 1'±

Statement of evidence relative to this corner location is on back of page.

I hereby certify that this document and the data contained herein was prepared by me or under my direct supervision.

[Signature] 2/3/2010
SIGNATURE DATE

Registration No. 43844

Land Surveyor, Professional Engineer
 County Surveyor, County Engineer

OFFICE OF THE COUNTY RECORDER

County of JUN 18 2010

I hereby certify that this document was filed in the Co. Recorders office at _____ .M on the _____ day of _____ A.D. 20 _____

County Recorder [Signature], Deputy

By _____, Deputy
DOCUMENT NO. _____

Statement of Evidence

In 1861, D. W. Wellman and S. S. Smoot did the original subdivision of the township.

On May 12, 1979, as stone was found at the corner. Another stone and spring was placed over the stone.

On June 12, 2009, Bueltel-Moseng Land Surveying dug by hand and found a rolled up spring over a large field stone. We placed a 1" pipe with seal #43844 over the stone and a steel fence post with yellow survey marker tube 1'± west of it.